



MATATIELE
LOCAL MUNICIPALITY

MATATIELE LOCAL MUNICIPALITY

Research and analysis of ward profiling: Ward based plans

WARD 20

May 2018

TSHANI
CONSULTING C.C.

Table of Contents

1. Executive Summary of Ward4

2. Methodology.....5

3. Ward Overview5

4. Socio Economic Analysis6

5. Built Environment Assessment..... 12

6. Current Projects 15

7. Ward Needs and Priorities 15

8. Stakeholders within Ward 16

9. Social Challenges within Ward..... 16

List of Figures

Figure 1: Gender Distribution	6
Figure 2: Age within Ward Distribution – Census 2011	7
Figure 3: Language Proficiency within Ward – Census 2011	7
Figure 4: Gender of Household Head - Census 2011	8
Figure 5: Types of Dwelling within Ward – Census 2011	9
Figure 6: Level of Education	9
Figure 7: Individual Monthly Income - Census 2011	11

List of Tables

Table 1: SWOT Analysis – Community Based Planning Program 2017 (Data Collection)	5
Table 2: Major Event within the Ward – Community Based Planning Program 2017 (Data Collection)	5
Table 3: Programmes within the Ward – Community Based Planning Program 2017 (Data Collection)	6
Table 4: Population Size and Distribution within the Ward – Community Based Planning Program 2017 (Data Collection)	6
Table 5: Social Grant Dependency within Ward - Community Based Planning Program 2017 (Data Collection)	7
Table 6: Child and Female Headed Households within the Ward - Census 2011	8
Table 7: Education Facilities within Ward - Community Based Planning Program 2017 (Data Collection) ..	9
Table 8: Churches and Religious Organisations within the Ward - Community Based Planning Program 2017 (Data Collection)	10
Table 9: Community Halls - Community Based Planning Program 2017 (Data Collection)	10
Table 10: Economic Activity - Community Based Planning Program 2017 (Data Collection)	11
Table 11: Tourism Activities - Community Based Planning Program 2017 (Data Collection)	11
Table 12: Agricultural Activities	11
Table 13: Existing Skills within the Ward: Community Based Planning Program 2017 (Data Collection) ..	12
Table 14: Access to Waste Removal - Community Based Planning Program 2017 (Data Collection)	12
Table 15 : Access to Water - Community Based Planning Program 2017 (Data Collection)	12
Table 16 : Access to Sanitation - Community Based Planning Program 2017 (Data Collection)	13
Table 17: Main source of energy	14

Table 18: Roads and Bridges within the Ward	15
Table 19: Ward Needs	15
Table 20: Current Projects	15
Table 21: Infrastructure Priorities Stakeholder within Ward	16
Table 22: Stakeholders within Ward	16
Table 23: Social Challenges within Ward	16

List of Plans

Plan 1: Ward 20 Locality	5
Plan 2: Education Facilities	10
Plan 3: Health Care Facilities	10
Plan 4: Social Facilities Plan	10
Plan 5: Access to Waste Removal - Census 2011	12
Plan 6: Access to piped water within the Ward - Census 2011	13
Plan 7: Access to Flush toilets - Census 2011	13
Plan 8: Electricity for Lighting within the Ward - Census 2011	14
Plan 9: Access to Electricity for Cooking within Ward - Census 2011	14
Plan 10: Roads and Bridges within the Ward - MLM GIS	15
Plan 11: Ward Priorities Plan	17

The following sections have been identified and populated as part of the analysis for Ward 20. The headings, which have been covered are seen as critical topics for the ward analysis. When broken down, one can properly understand and interpret the spatial economic status quo and development trajectory of the Ward.

1. Executive Summary of Ward

Ward 20 comprises of Itsokolele Location, Njongweville Njongweville Ext, .Mountain View, Harry Gwala and Park Harry Gwala Park Ext. The ward is surrounded by ward 19, 03, 06 and 01. There is total population of 9550 which is largely constituted by youth. The average household size for the ward is 4. The gender distribution within the ward is made up of 57% female and 43% males.

The ward shares a close proximity to Matatiele town as well as Route 56 to Mt Fletcher. The ward has a range of tourism attraction places namely, Wilfred Baur Nature Reserve and Matatiele Nature Reserve with Mountain Lake. The ward also appears to have a number of cooperatives which practise different economic activities.

This ward identifies a significant number of educational facilities, ranging from pre-schools to high school level. There are three (3) pre-schools within the ward, located in Harry Gwala and Itsokolele.

MLM is responsible for waste removal in all the settlements of Ward 20. The service is rendered to the ward twice every week on Tuesday and Thursday.

This ward has access to piped water from the District Municipality. All the areas of the ward has access to running water inside the yard and dwellings.

Sanitation is of a good standard in Ward 20 as it shows that households in this ward use flush toilets.

This ward is one of the wards that are electrified within the Municipality. More than 7000 of people use electricity for lighting and cooking within the ward. There is a need to encourage the use of solar system as an alternative or renewable source of energy.

This ward shares most networking roads with ward 01, 03, 06 and 19. MLM has provided the ward with internal streets that are still in good condition, however some internal streets need maintenance. Some access roads need maintenance to access other places in this ward.

Ward 20 indicated unemployment and alcohol abuse as its highest social challenges.



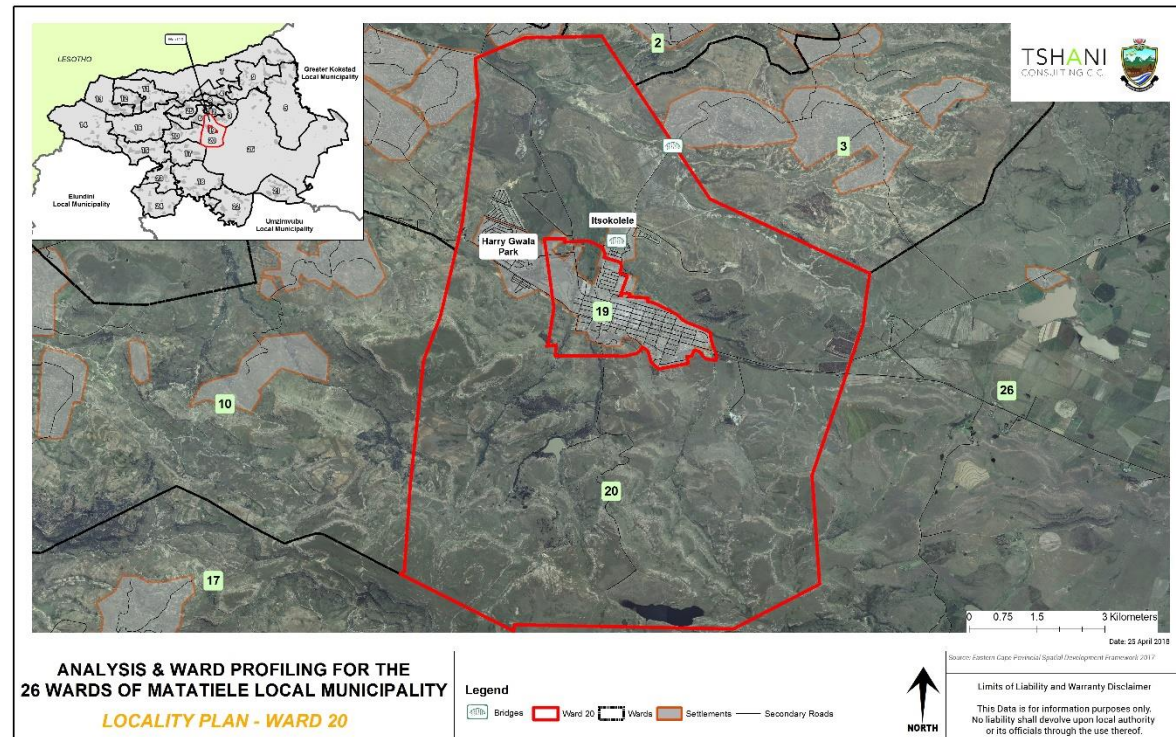
The Matatiele Local Municipality (MLM) appointed Tshani Consulting CC for the analysis and ward profiling for the 26 wards within MLM.

The purpose of this report is to review the current the Ward Based Plan prepared for Ward 20 and the LM that was developed in 2014. Through this exercise the ward profiling ensures the prioritisation of projects and channelling such projects into places of need.

The report serves as the analysis and profiling of Ward 20.

1.1. Locality

Ward 20 is situated in the heart of MLM. The Ward is surrounded by wards 2, 3, 6, 10, 17, and 26. It should be noted that Ward 20, encompasses ward 19 in its entirety. As identified within the Community Outreach Programme, the main villages within Ward 20 are Itsokolele Location, Njongweville, Njongweville Ext, Mountain View, Harry Gwala Park and Harry Gwala Park Ext. It is to be noted that all Ward which have been listed were identified through the community outreach programmes completed by the Municipality in 2017. The Village names captured on plans are as per the villages, which exist on the GIS and Census databases.



Plan 1: Ward 20 Locality

2. Methodology

The methodology utilised for the analysis and profiling in this report was derived as follows:

1. Synthesis an interpretation of questionnaires and community feedback;
2. Translated information into a Strength, Weakness, Opportunities and Threats analysis;
3. Conducted a verification process on the populations profiles, social profile and economic profile using Census 2011 data which was conducted at a Ward level;
4. A detailed GIS mapping exercise was completed in order to translate the findings into spatially represented outcomes;
5. Ward needs, and priorities were identified for the wards;
6. Needs identified for the ward were translated into projects and a consolidated implementation plan together within financial implications was completed.

The analysis of ward 20 also took its '*point of departure*' from the primary data which was available from the data collection and community consultation completed in the previous phase

3. Ward Overview

The section below highlights the specific sections, which were analysed in relation to ward 20.

4.1 SWOT Analysis

The SWOT analysis was developed, through a series of engagement sessions with the local community and traditional leadership of Ward 20, by the municipality.

STRENGTHS	WEAKNESSES
<ul style="list-style-type: none"> Land Infrastructure High School 	<ul style="list-style-type: none"> Gravel road in townships Potholes Lack of access road maintenance Access to community hall Value of Paying rates
OPPORTUNITIES	THREATS
<ul style="list-style-type: none"> Job creation short term Free basic services (indigent) 	<ul style="list-style-type: none"> Floods New electricity smart meters Community park opposite north end RDP Houses Un-accessible information to the Key stakeholders from the municipality.

Table 1: SWOT Analysis – Community Based Planning Program 2017 (Data Collection)

4.2 Major events within the Ward

The table below highlights the major events which have taken place /happened within Ward 20 over the last couple of years. The ward has experienced positive investment in the form of a donga rehabilitation, community park development, etc.

EVENT/ OCCURANCE	YEAR	IMPACT
Disaster	2014\2015	Occurred frequently
High rate of crime	2012-2017	Bad
Community park	2014-2015	Good but turned bad as it is not Being taken care off
Donga rehabilitation	2012-2013	Good
Electrification	2012-2013	Good

Table 2: Major Event within the Ward – Community Based Planning Program 2017 (Data Collection)

4.3 Services/ Infrastructure and Programmes Within the Ward Within The 5-Year Period (2012-2016)

Ward 20 has experienced a fair amount of infrastructure investment in the 2015-16 financial year. It is evident that the benefits of these projects have benefited the ward as well as the municipality as a whole.

Type	Year	Beneficiaries	Status / present condition	Impact
Electrification of 583 houses	2012-2013	583	Good	Good
Tar Road - Harry Gwala Park	2012-2013	1110	Good	Good
Tar Road Harry Gwala Ext	2014-2015	583	Good	Good
High must lights Injongoville Ext	2016	256	Good	Good but there is still a need for two more lights
Water smart metre (the whole ward)	2016	2273	Complicated the areas who had no water they do have water but it is not accessible as the office are closed during the weekends	Bad

Table 3: Programmes within the Ward – Community Based Planning Program 2017 (Data Collection)

4. Socio Economic Analysis

4.1. Population Profile

The sub sections below provide an analysis of the population profile of ward 20.

4.4.1. Population Size and Distribution

The total population of Ward 20 is 9550.

LIST OF VILLAGES/ LOCATIONS/SUB AREAS	OTHER NAME/S FOR THE VILLAGE/ LOCATION	NUMBER OF HOUSEHOLDS			POPULATION SIZE (NUMBER OF PEOPLE)		
		Community Feedback	Census 2011	Projected Household by 2050 growing at 0.3% Per Annum	Community Feedback	Census 2011	Projected Population by 2050 growing at 0.4% Per Annum
Itsokolele Location	N/a	201	-		804	-	
Njongweville	Shiyas	106	-		446	-	
Njongweville Ext.	Dark City	256	-		1 280	-	
Mountain View	N/a	88	-		264	-	
Harry Gwala Park	Area C	1110	-		4 424	-	
Harry Gwala Park Ext.	Area C Entsha	583/600	-		2 332	-	
Total Population - Ward 20:		2 344/2 361	3 543	3 911	9 550	11 817	13 427

Table 4: Population Size and Distribution within the Ward – Community Based Planning Program 2017 (Data Collection)

4.4.2. Gender Distribution

The chart below depicts that 57% of the total population of Ward 20 are female. This is typical of most wards within Matatiele. This statistic also speaks to the table below on child headed households.

The growing distribution of females within the ward necessitates the provision of support for increased fertility demands and maternal support.

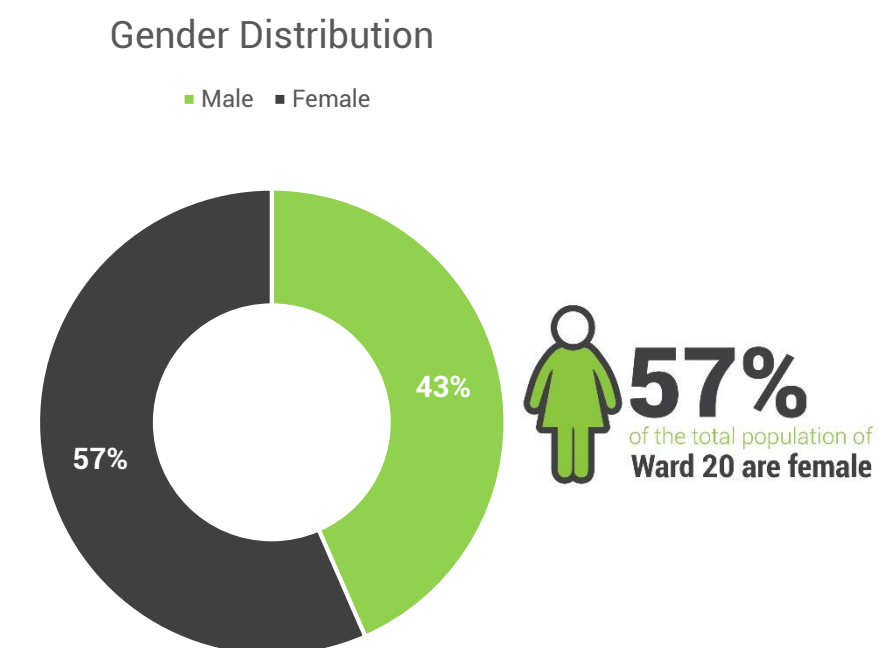


Figure 1: Gender Distribution

4.4.3. Age

The dominant age group in Ward 20 is the classified age group of 00 – 04 yrs. The population of this ward is dominated by younger people (00 - 29). There is a sharp decline in the number of people per age group from ages 30 years and older. *This community certainly needs to invest more in educational institutions (schools and crèches) and employment opportunities in order to attend to the needs of the youthful population.*

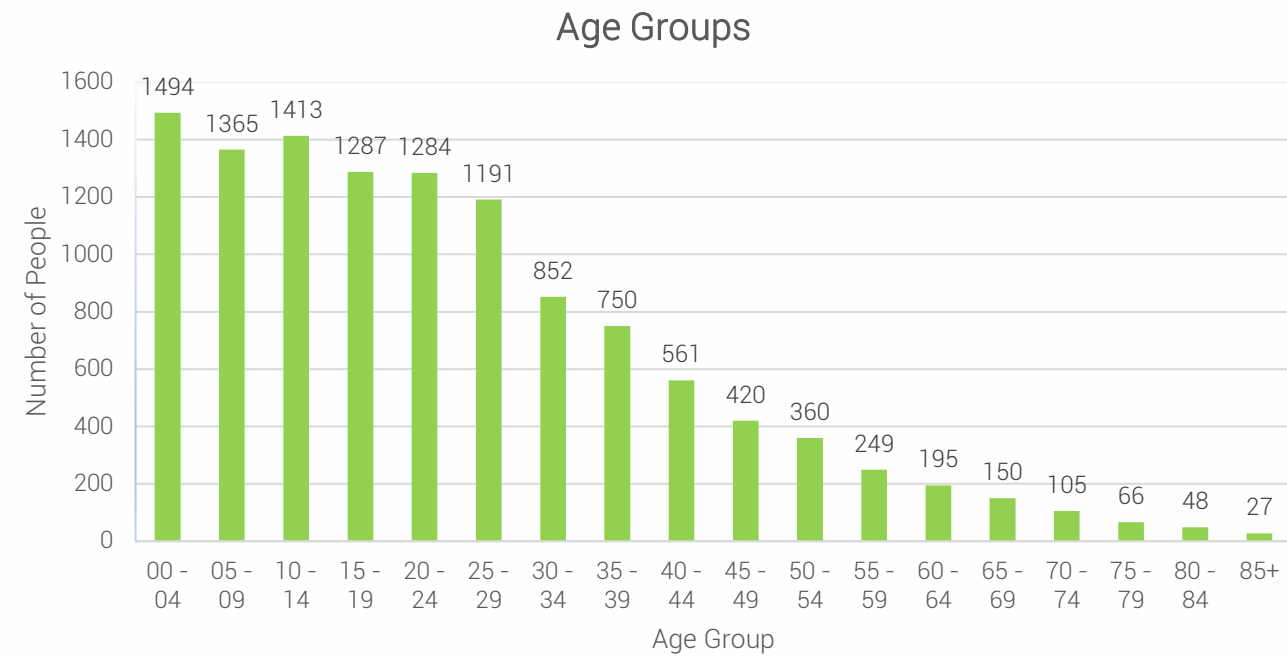


Figure 2: Age within Ward Distribution – Census 2011

4.4.4. Language Distribution

It is evident that the most spoken language in Ward 20 is isiXhosa, followed by Sesotho. The language preference correlates to the racial split within ward 20 and is an indication of the language preference which people appreciate.

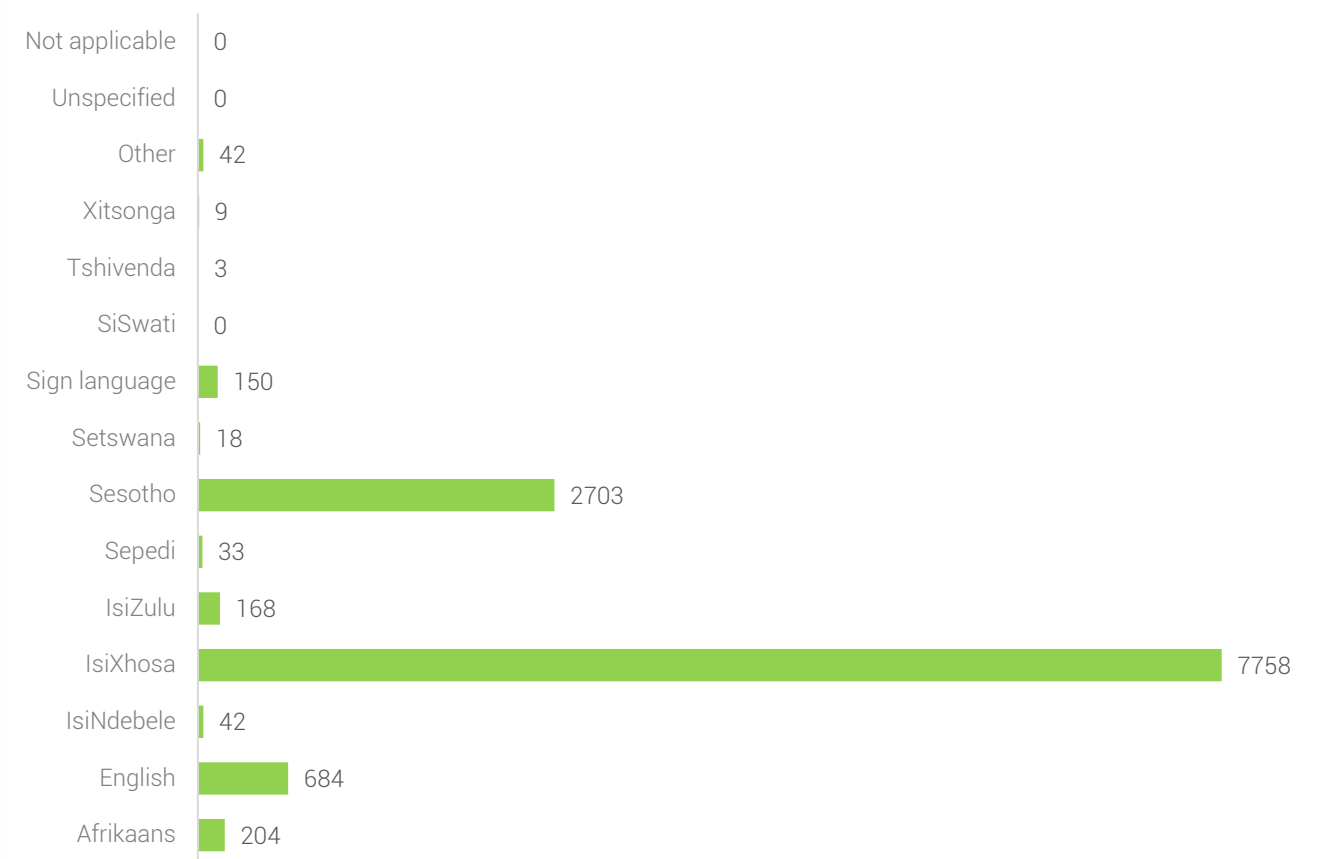


Figure 3: Language Proficiency within Ward – Census 2011

4.4.5. Social Grants

The dependency on grants within Ward 20 continues to be a major challenge. The highest grant dependency is on Child Support (1 500) is in direct correlation with the high number of female headed households and majority female population. Such is a major challenge for the LM, province and country at large.

TYPE OF SOCIAL ASSISTANCE OFFERED	NUMBER OF HOUSEHOLDS
	Community Feedback
Food parcels	120
Child support grant	1500
Old age grant	800
Foster grant	200
Disability grant	100

Table 5: Social Grant Dependency within Ward - Community Based Planning Program 2017 (Data Collection)

4.4.6. Indigent Support

A rural municipality with a high dependency rate on social assistance; MLM has a large number of indigent households. Particularly for ward 20. There a number of indigent households. Although the number is high, it is only a few households that receive indigent supports form the municipality. The challenges that affect to the provision of such support, include beneficiaries with no properly documents, challenges with verification of beneficiaries amongst other issues. In this ward, MLM provides indigent support in the form of electricity and refuse removal. The current indigent support register show that 885 Beneficiaries in this ward receives support.

4.5. Household Profile

The section below details of households within Ward 20 in terms of their size, gender of heads of households and distribution.

4.5.1. Household Size

The household size within Ward 20 include an average of four (4) persons per household.

4.5.2. Heads of Households

The issue of child headed households is not a challenge in Ward 20, the existence of such households was not indicated during the community data collection

Villages	Child-Headed households		Female-Headed Households	
	Community Feedback	Census 2011	Community Feedback	Census 2011
Itsokolele Location	0		60%	
Njongweville	0		60%	
Njongweville Ext.	0		60%	
Mountain View	0		30%	
Harry Gwala Park	0		70%	
Harry Gwala Park Ext.	0		70%	
Total	0			2001

Table 6: Child and Female Headed Households within the Ward - Census 2011

The graph below indicates that approximately 56% of households in ward 20 are headed by women.

Gender of Household Head

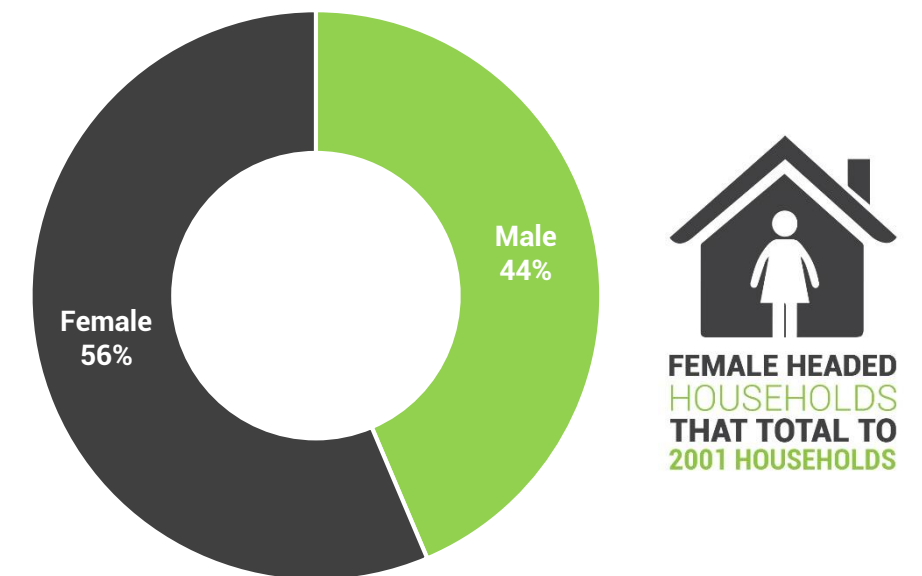


Figure 4: Gender of Household Head - Census 2011

4.5.3. Household Dwelling types

The majority of people in Ward 20 live in a house or brick/ concrete block structure on a separate stand. There is existence of informal structures in some of the settlements; which needs to be considered when developing building standards and regulations within the LM. *There needs to this be greater Land Use Planning By-Law enforcement to ensure that the type of development is controlled and managed.*

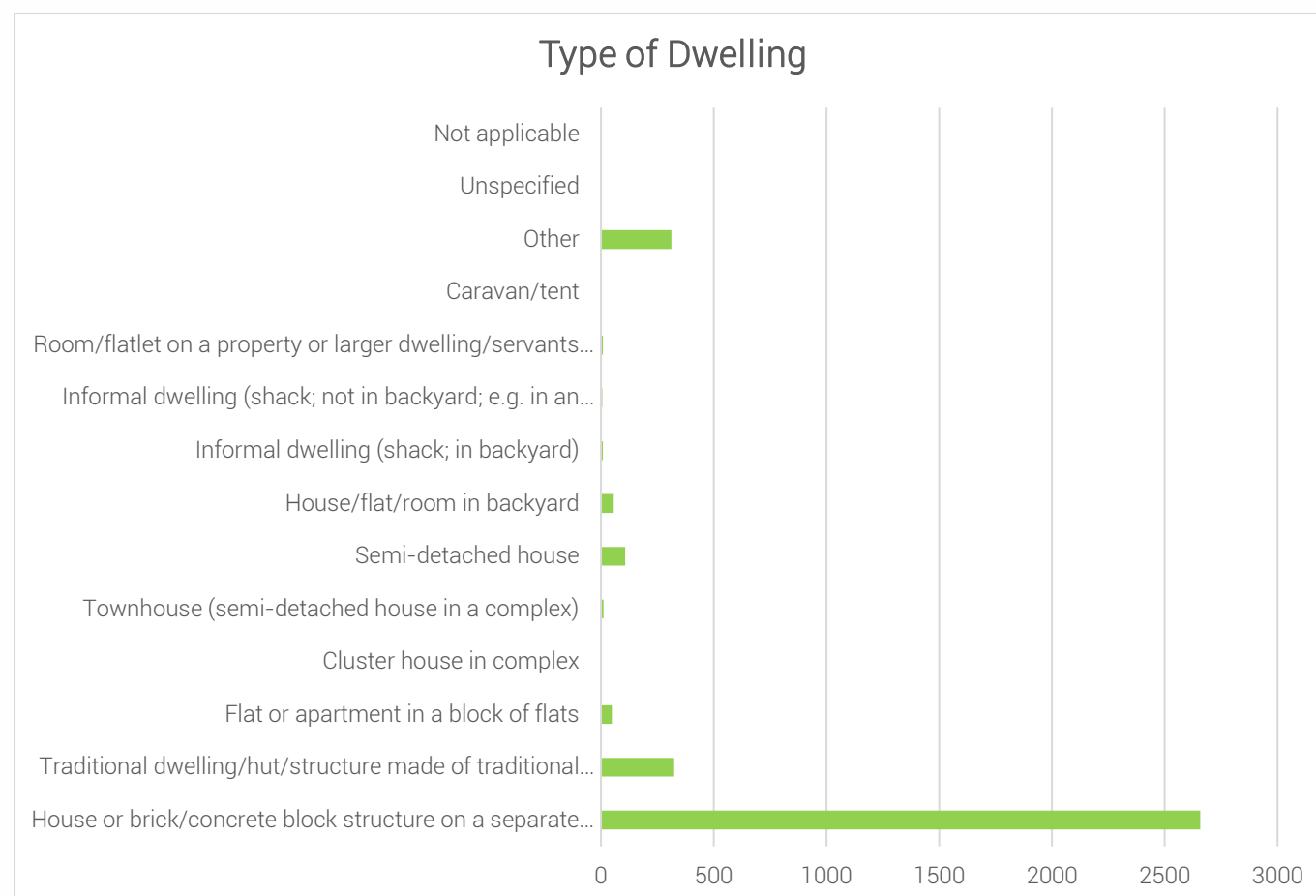


Figure 5: Types of Dwelling within Ward – Census 2011

4.6. Social Profile

4.6.1. Education Facilities: Community Feedback

The range of schools identified in the table below was developed from the community feedback sessions.

NAME	TYPE	AREA LOCATED	NUMBER OF LEARNERS
Bokamoso	Primary school	Harry Gwala park	-
Lechamo Chamo Legacy	Pre school	Harry Gwala	-
Masakhane	Pre school	Harry Gwala	-
St Nicholas	Pre school	Itsokolele	-
Khanya Naledi	Combined school	Njongweville	-
	Pre school	Harry Gwala EXT	-

Table 7: Education Facilities within Ward - Community Based Planning Program 2017 (Data Collection)

4.6.2. Level of Education

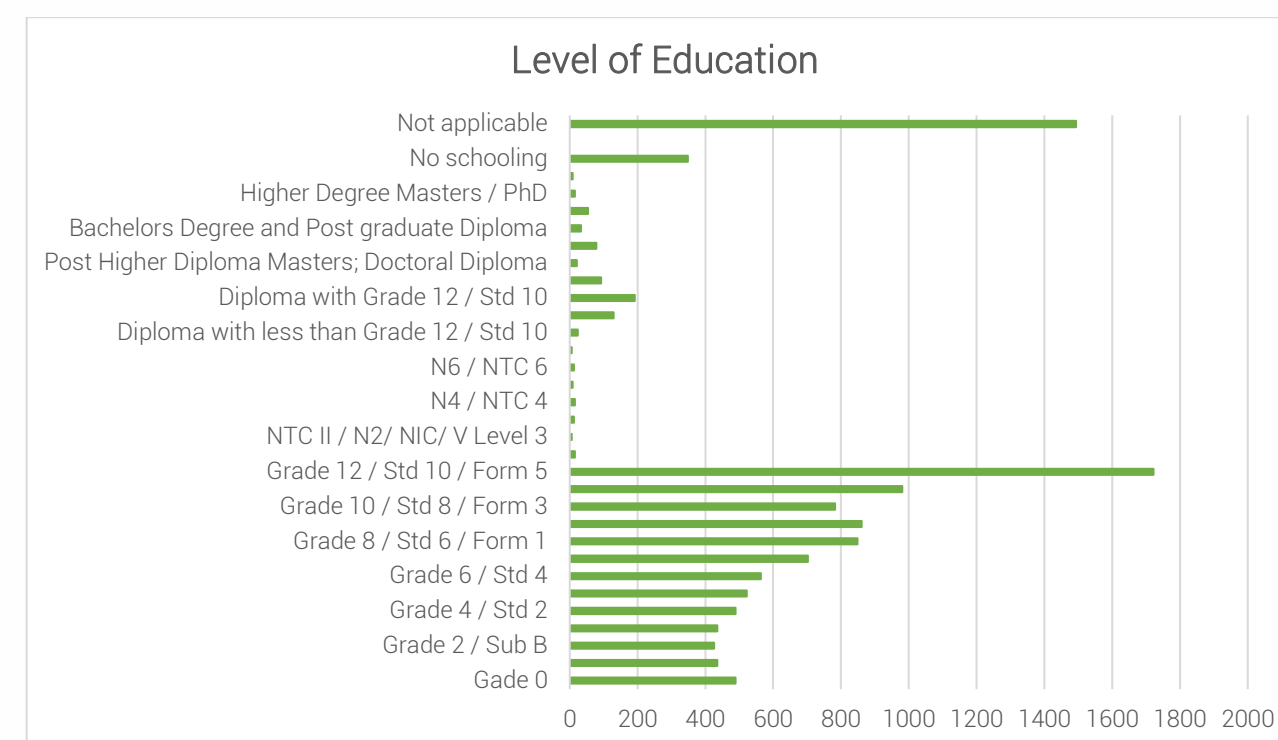
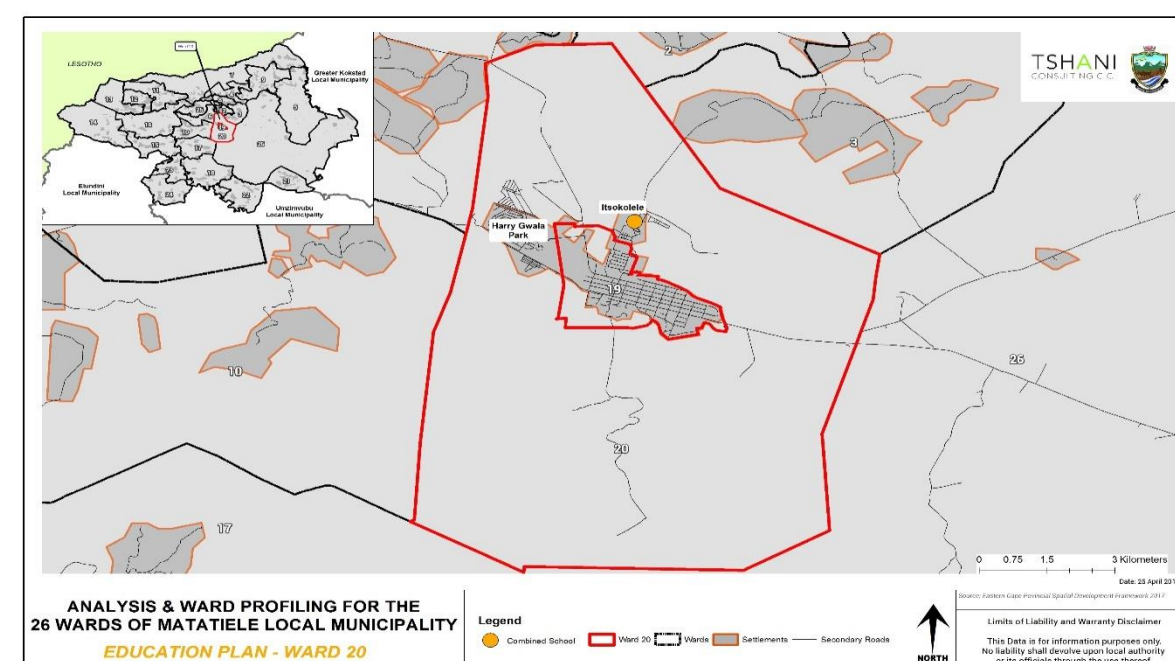


Figure 6: Level of Education

Census 2011 identified that grade 12 has the highest number of learners going to school and they are 1500 and grade 9 is less than 1000 of the learners attending school.

4.6.3. Education Facilities:

The map below indicates that Ward 20 has a single combined school. There needs to be a consideration of educational facilities given the high youthful population within Ward 20.



Plan 2: Education Facilities

4.6.4. Churches and Religious Organisations: Community Feedback

The range of religious facilities identified in the table below was developed from the community feedback sessions. There are 4 churches located within ward 20.

NAME	LOCATION/AREA	NUMBER
Family bible	Harry Gwala park	1
Matatiele Christian Centre	Harry Gwala EXT	1
Jehova's Witness	Itsokolele	1
Assemblies of God	itsokolele	1

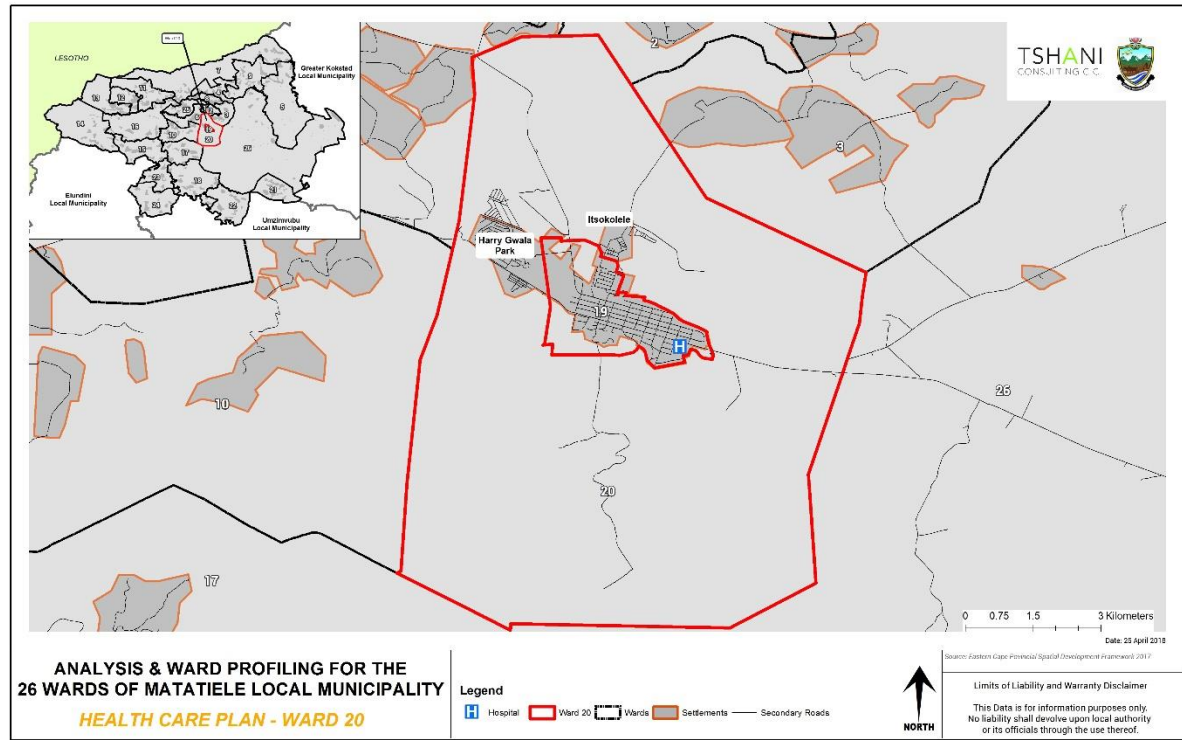
Table 8: Churches and Religious Organisations within the Ward - Community Based Planning Program 2017 (Data Collection)

4.6.5. Health Care Facilities: Community Feedback

The community feedback identified no health care facilities within the ward.

4.6.6. Health Care Facilities:

The map below spatially identified the hospital which is located towards the boundary of Ward 19 and there are no clinics or hospitals located with Ward 20.



Plan 3: Health Care Facilities

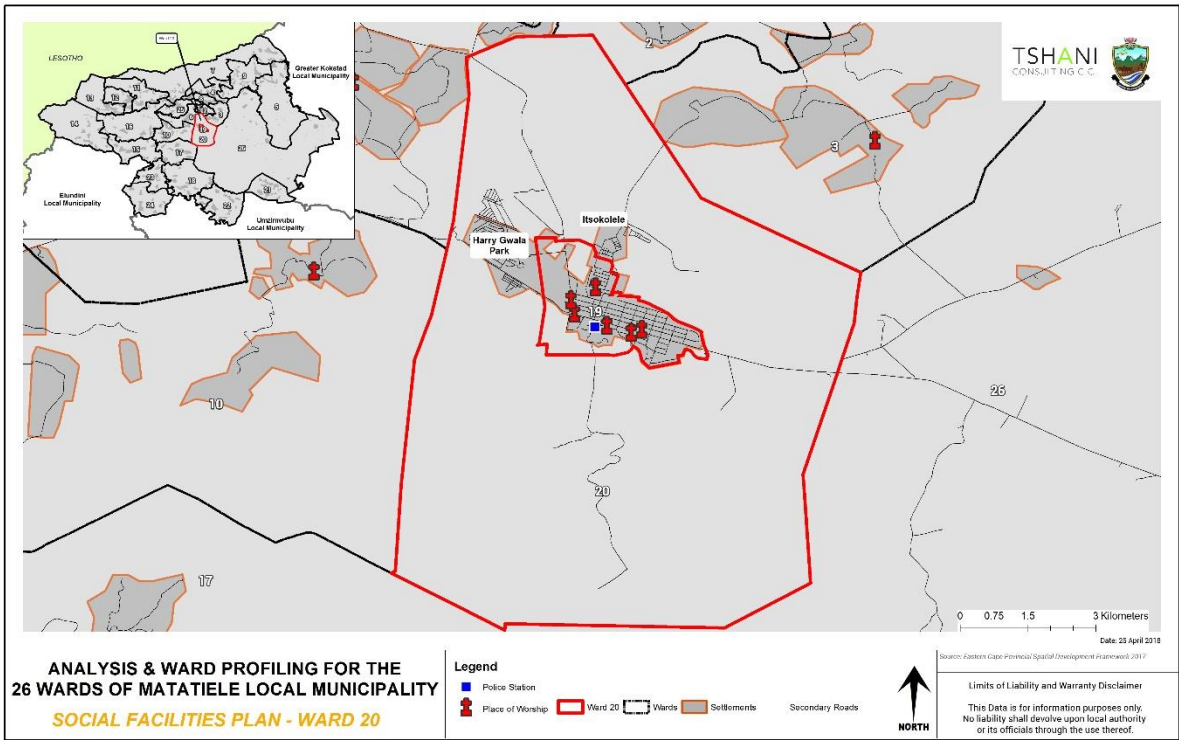
4.6.7. Community Hall: Community Feedback

Name and type	Area located
Nokhwezi community hall	Itsokolele Location
Harry Gwala community hall	Harry Gwala Park

Table 9: Community Halls - Community Based Planning Program 2017 (Data Collection)

4.6.8. Other Social Facilities

The map below spatially identifies places of worship and police stations. Places of worship are located within ward 19 instead.



Plan 4: Social Facilities Plan

4.7. Economic Profile:

4.7.1. Individual Monthly Income:

Unemployment is a big challenge in the ward, as it is with the rest of the municipality. The ward consists on only a few people who are working; while the majority are unemployed. Another factor is that the ward is characterised by a large population that is not of a working age, which is those less than 15years and those above 64 years. The majority of people at of a working age are not employed, mostly these are youth. Over half of the population of ward 20 receives less them R800 or no income monthly. This community has low to medium income earners. There is therefore a high dependency of social grants.

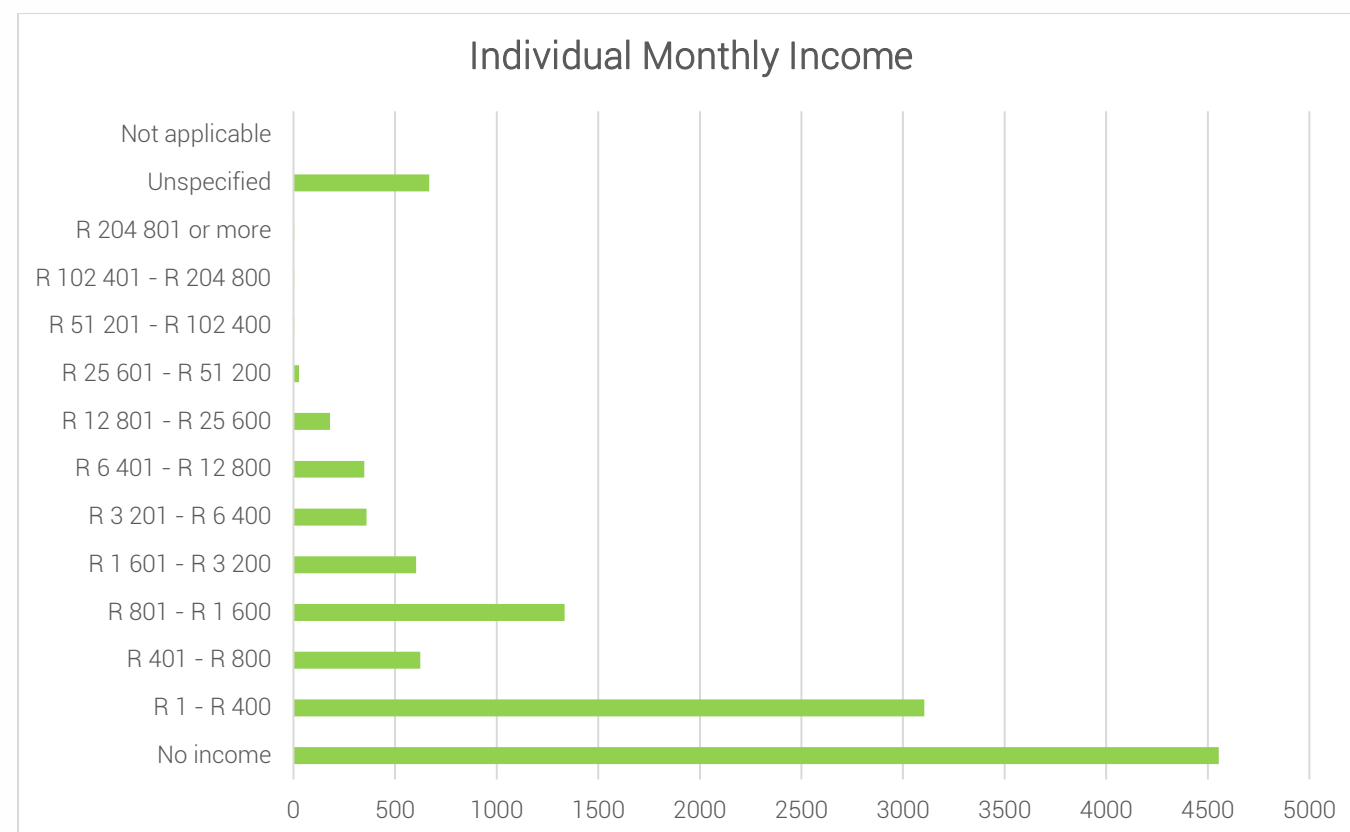


Figure 7: Individual Monthly Income - Census 2011

4.7.2. Economic Activities: Community Feedback

It is noted that shops that sell alcohol are the most dominant in ward 20 together with Spaza Shops. Two (2) facilities which retails alcoholic beverages were noted at Ward 20. This is very typical of areas with a very high unemployment rate and youth. Ward 20 requires more diversified economic activity..

RETAIL (INDICATE SHOPS, SPAZA SHOPS, CAFÉ, TARVENS, SALONS, ETC)	
TYPE	LOCATION
Kesmo Sports Bar	Itsokolele
Zama-Zam Tarven	Itsokolele
Mambomambo Store	Itsokolele
Spaza shops (3)	Njongweville
Spaza shops (12)	Harry Gwala Park
Spaza shops (7)	Harry Gwala EXT
Tarven	Harry Gwala Park

Table 10: Economic Activity - Community Based Planning Program 2017 (Data Collection)

4.7.3. Tourism Activities

The following tourism activities are present within ward 20.

TOURISM (INDICATE B&B'S, HOTELS, ATTRACTION SITES, ETC)	
TYPE	LOCATION
Pleasure dam (Wilfred Baur Nature Reserve – Fishing, Zoo, Picnic area	Between Harry Gwala and Khoapha Location
Matatiele Nature Reserve - Mountain Lake, fishing, Camping,	Matatiele Nature Reserve

Table 11: Tourism Activities - Community Based Planning Program 2017 (Data Collection)

4.7.4. Agricultural Activities

The community of ward 20 practises both commercial and subsistence farming for their agricultural products.

TYPE OF PRODUCTS	FOR HOUSEHOLD CONSUMPTION	FOR SELLING TO THE COMMUNITY
Cattle	N/a	No
Sheep	N/a	No
Goats	N/a	No
Horses	N/a	No
Poultry	N/a	No
Vegetables	Yes	No
Fruits	Yes	No
Grains	No	No

Table 12: Agricultural Activities

4.7.5. Products Produced in Wards

According to the community outreach programme, no products are produced in ward 20.

Existing Skills

The ward constitutes of some diverse skills which is a major asset for the ward. Such individuals need to be further trained and opportunities to mentor other unemployed individuals within the community should be encouraged. The entrepreneurs within ward should also be given better access to market opportunities. There a broad range of professionally qualified individuals whom also are major assets for Ward 20.

TYPE OF SKILLS	EXISTING (INDICATE WITH YES/NO)	TYPE OF SKILLS	EXISTING (INDICATE WITH YES/NO)
Carpenters	Yes	Pottery	No
Plumbing	Yes	Teachers	Yes
Builders	Yes	Police	Yes
Artists	Yes	Health Officials	Yes
Gardening	Yes	Accountants	Yes
Cooking	Yes	Engineers	Yes
Sewing	Yes	Lawyers	No
Writing	Yes	Other (Indicate)	
Drivers	Yes		
Farmers	Yes		

Table 13: Existing Skills within the Ward: Community Based Planning Program 2017 (Data Collection)

5. Built Environment Assessment

5.1. Access to Waste Removal

The community feedback session presented the following findings:

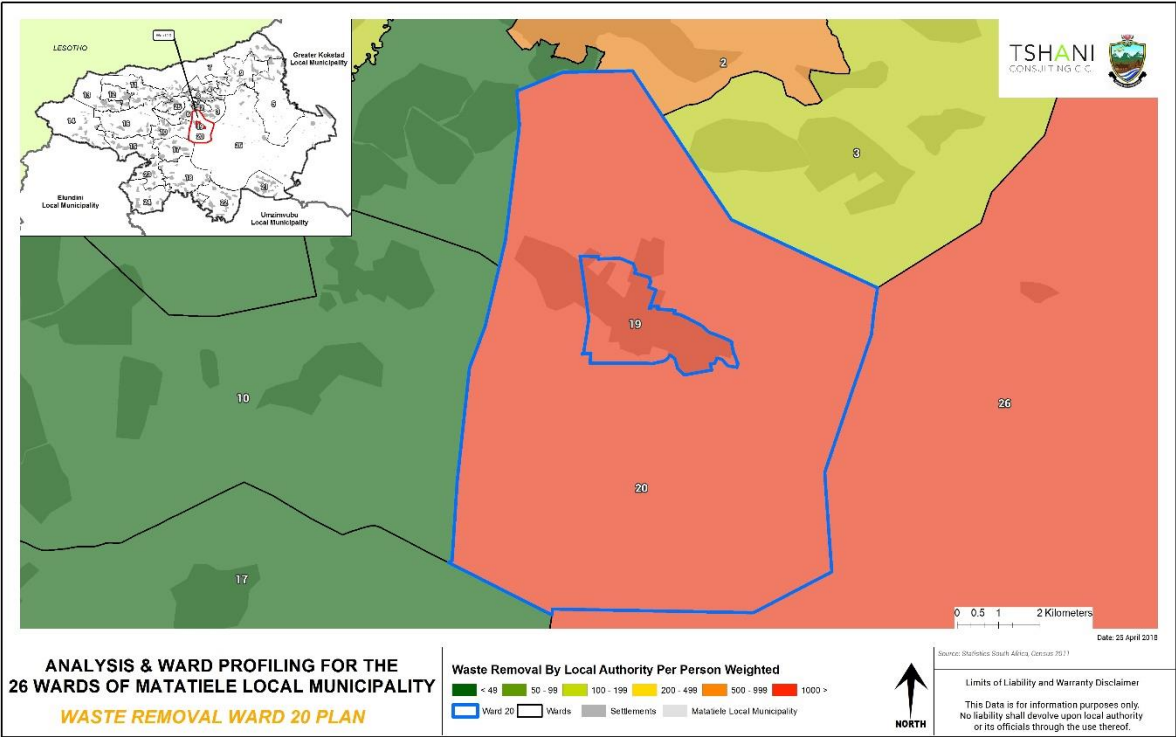
LOCATION/ AREA	NO. OF HOUSEHOLDS SERVICES	FREQUENCY
Harry Gwala park	1106	Twice a week
Harry Gwala EXT	600	Twice a week
Mountaun view	88	Twice a week
Itsokolele	201	Twice a week
Njongweville	106	Twice a week
Njongweville EXT	256	Twice a week

Table 14: Access to Waste Removal - Community Based Planning Program 2017 (Data Collection)

The community data collection analysis found that the majority of people within Ward 20 have their waste removed by the local authority/ private company at least once a week.

Additional Notes:

- Waste removal is inconsistent, or the times are inconsistent. There is a short supply of bins for the resident to put their rubbish in. Residents should also be given plastic bags so that they can be able to secure their rubbish properly.



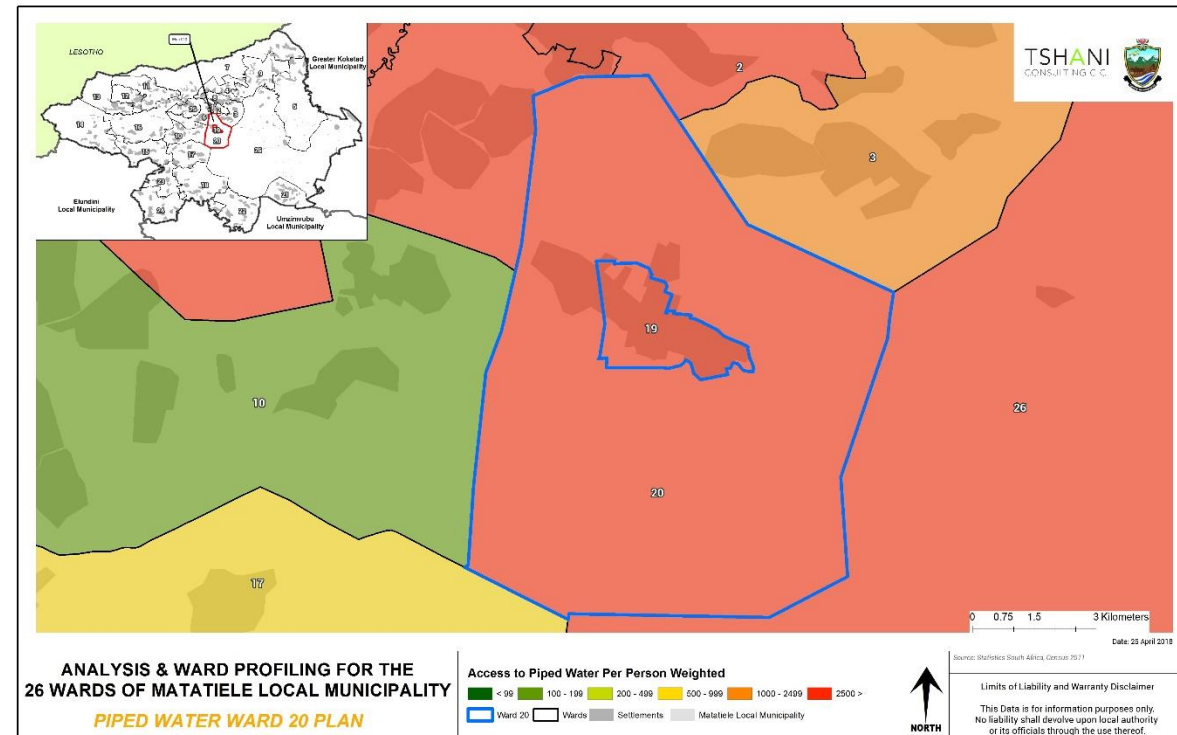
Plan 5: Access to Waste Removal - Census 2011

5.2. Access to Water

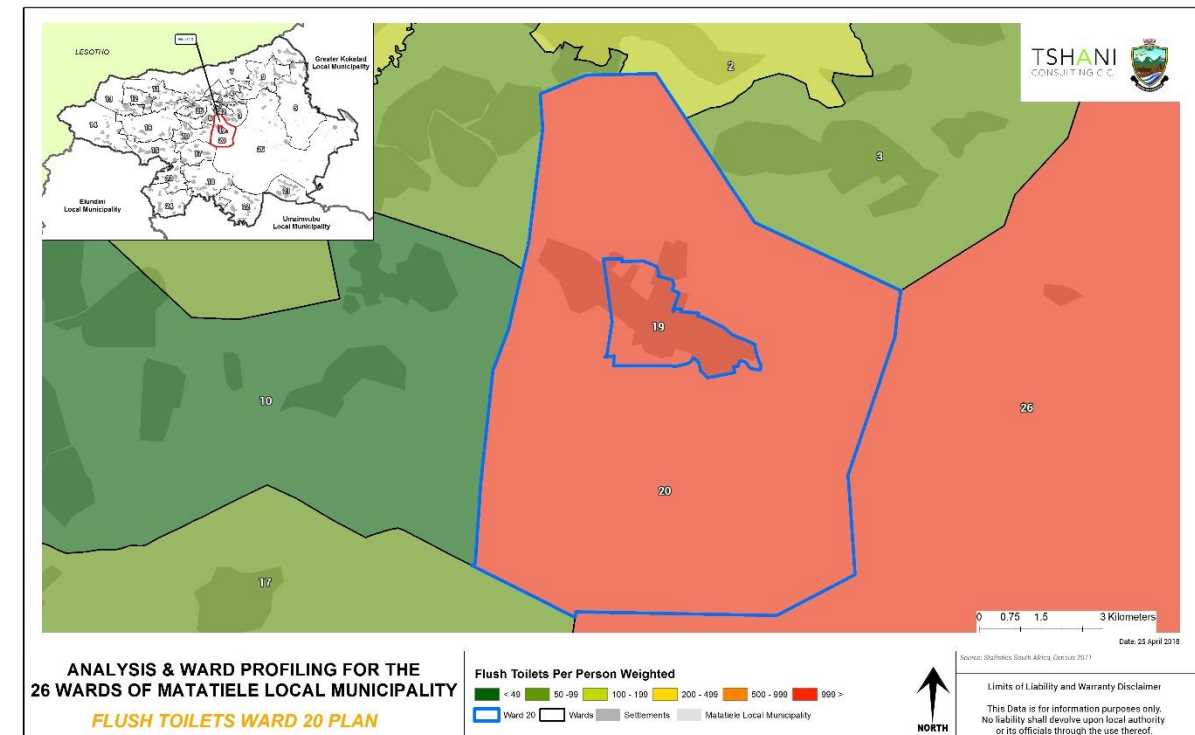
The main supplier of water in ward 20 is from the District Municipality. During the CBP data collection; the following is the data collected:

VILLAGE/LOCATION	COMMUNITY TAPS	WATER-INSIDE YARD	WATER-INSIDE HOUSE	BOREHOLES	DRAW WATER FROM STREAMS, DAMS, RIVER
Harry Gwala park		1106	1106		
Harry Gwala EXT		600	600		
Mountain view		88	88		
Itsokolele		201	201		
Njongweville		106	106		
Njongweville EXT		256	256		

Table 15 : Access to Water - Community Based Planning Program 2017 (Data Collection)



Plan 6: Access to piped water within the Ward - Census 2011



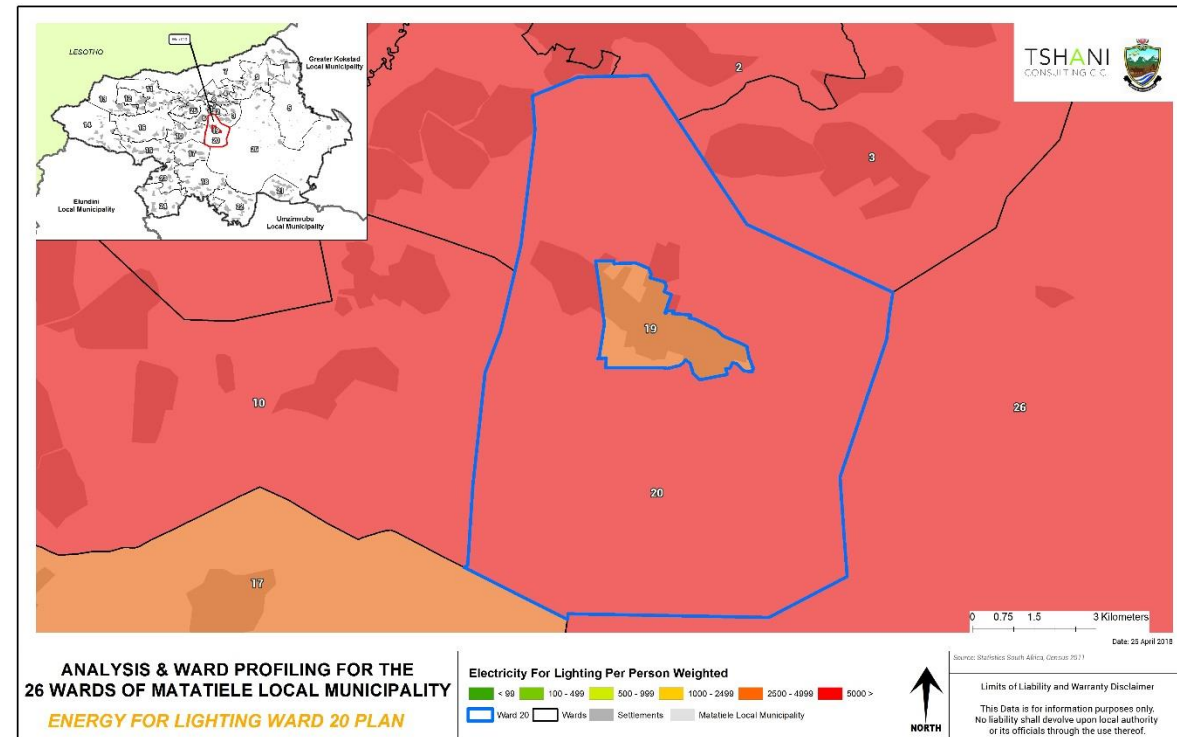
Plan 7: Access to Flush toilets - Census 2011

5.3. Access to Sanitation

Households in the ward use flush toilets as per the CBP data collection

VILLAGE/LOCATION	VENTILATED PIT TOILETS	FLUSH TOILETS	Other
Harry Gwala park		1106	
Harry Gwala EXT		600	
Mountain view		88	
Itsokolele		201	
Njongweville		106	
Njongweville EXT		256	

Table 16 : Access to Sanitation - Community Based Planning Program 2017 (Data Collection)



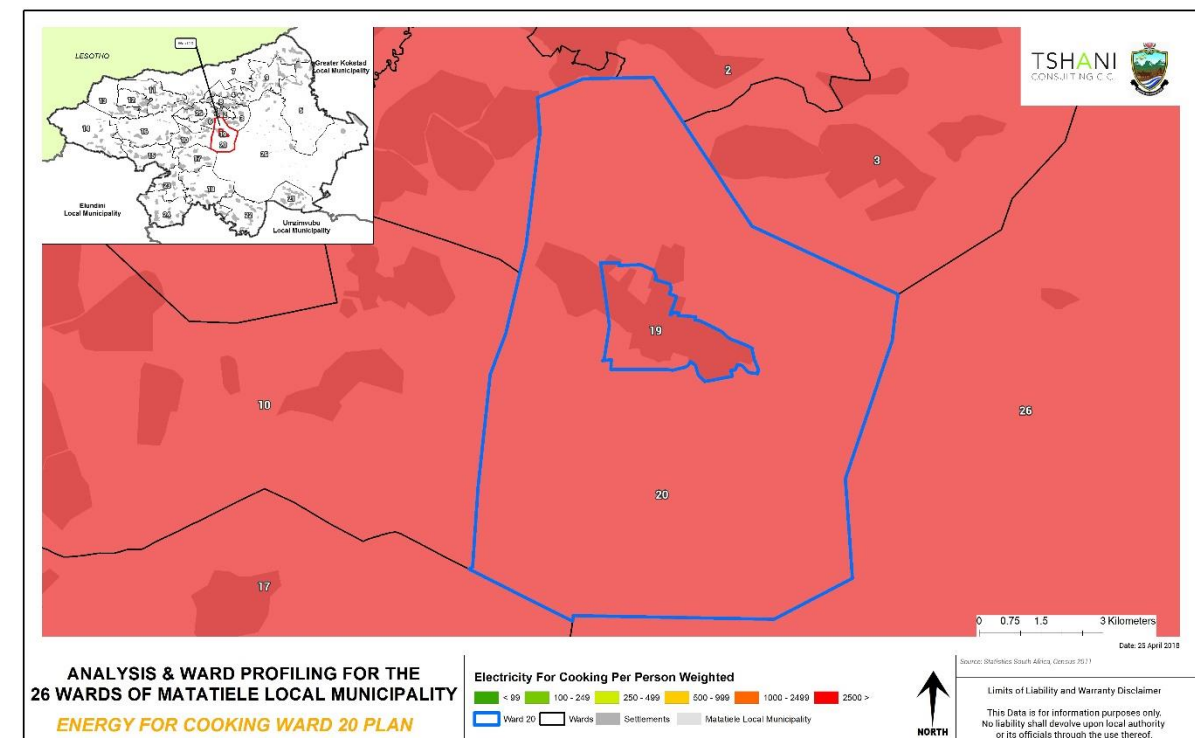
Plan 8: Electricity for Lighting within the Ward - Census 2011

5.4. Main source of Energy within the Ward: Community Feedback

The main source of energy within Ward 20 is electricity. This indicates that the level of service within the ward is relatively high. The analysis below further reiterates the status of electrification within the ward based on categories of lighting, heating, and cooking

VILLAGE/LOCATION	ELECTRICITY	SOLAR	NO ELECTRICITY/SOLAR
Harry Gwala park	1106		
Harry Gwala EXT	600		
Mountain view	88		
Itsokolele	201		
Njongweville	106		
Njongweville EXT	256		

Table 17: Main source of energy



Plan 9: Access to Electricity for Cooking within Ward - Census 2011

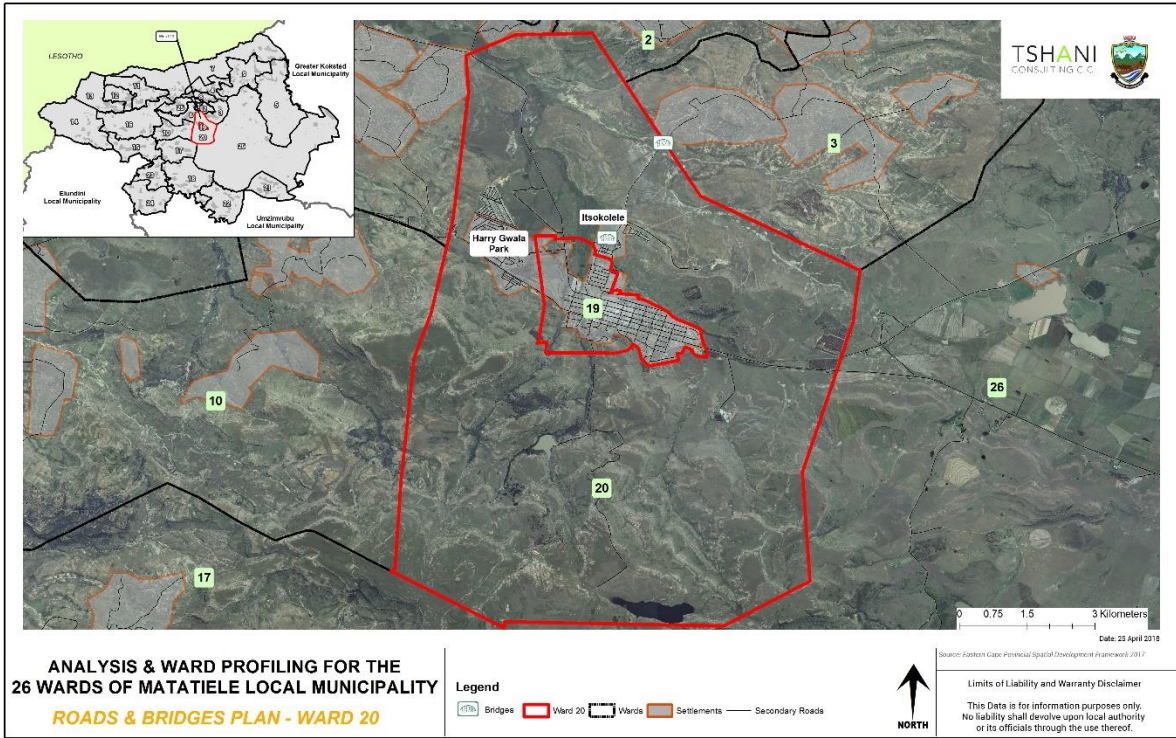
5.5. Roads and Bridges

The roads and bridges located within Ward 20, however they are in need of maintenance. Many of the roads are in poor condition with lack of storm water management. The plan below picks up on the extent of roads networks which are present within the ward.

NAME AND TYPE	AREAS COVERED	CONDITION OF THE ROADS
There are no street names in Harry Gwala park	Harry Gwala park Harry Gwala EXT	Internal roads not tarred only the main road is in a good condition
Main road	Harry Gwala park	Good
Internal roads	Harry Gwala park	Bad- gravel road no drive ways and storm water drainage. The tarred road it is only the main road
All streets have tar road	Harry gwala EXT	Good but drainage are not being maintained
No street names	Mountain view	The road and storm water drainage is budgeted for this financial year 2017\2018
Jabulani street Bongolethu street Zamokuhle street Thhandeka street Matala street Naledi street Thokoza street	Itsokolele	Bad Portholes and drainage needs to be cleaned

Zola road Sobantu street		
No street names	Njongweville	All streets needs reconstruction and the drainage have been cleaned but the dirt was left next to the drains when it rains it will go back inside the drains
No street names	Njongweville EXT	The tarred road it is only the main road. The internal street needs to be tarred as the erosion goes to the storm water drainage and the drainage are not being cleaned.

Table 18: Roads and Bridges within the Ward



Plan 10: Roads and Bridges within the Ward - MLM GIS

6. Current Projects

The following table highlighted the key projects which have been identified by the community. The projects are mainly linked to community development. *Further projects need to be targeted towards building a local economic base and spatial resilience.*

No	PROJECT/PROGRAMME NAME	STATUS	WHO IS RESPONSIBLE
	COUNCIL CHAMBER	In progress	MLM
	EPWP	On-going	MLM &Public works

Table 19:Ward Needs

7. Ward Needs and Priorities

The need and priorities which have been identified need to be prioritised in the municipal SDF and other local plans created. The projects range from short to long term projects and have been further broken down in the implementation plan.

VILLAGE/LOCATION/ SUB AREA	NEEDS IDENTIFIED
Itsokolele	Tar road (the internal road from the hostel street), Maintenance of play centre, Speed humps in Jabulani Road, Tennis Court needs to be maintained, maintenance of drainage system, maintenance of street lights, maintenance of Potholes, maintenance of municipal offices so to be utilised, Street names signs were taken down, need assistance with the issue of Stray animals in the location, Re-maintenance of community park, reconstruction of bridge between Itsokolele and Njongoville the bridge is too low
Njongweville and Dark City	Speed humps to be situated between Njongweville and Dark City, Sewerage, Clear sites for churches, maintenance of drainage system, high mast (2), Pre-school, tar road on internal roads, borehole activation, Road sign for School children in Khanya Naledi or scholar patrol, Side way walk along Khanya Naledi school
Mountain View	High Mast, Street names, Skip, Sport field
Harry Gwala Park	Drive way pipes must be installed, internal access roads must be tarred all, speed humps in Bokamoso, street lights be maintained, Apollo lights are not working need to be maintained regularly, Water some part of Harry Gwala have no access to water, the woman whose house was damaged by the disaster has not been assisted till now, SMME
Harry Gwala Ext.	Streetlights, Apollo lights, sport field, Pre-school, Donga Rehabilitation just above top houses in Harry Gwala Park ext,

Table 20: Current Projects

- ANDM must clear all debt with regarding water statements
- ANDM closes during the weekends, as community of ward 19 & 20 we need assistance with this manner/issue.

WARD 20	
INFRASTRUCTURE PRIORITIES	SOCIO- ECONOMIC PRIORITIES
1. Speed Humps	
1. Street Lights	
2. Internal Streets	
3. Pre School	
4. Sport Field	

Table 21:Infrastructure PrioritiesStakeholder within Ward

8. Stakeholders within Ward

The table below highlights the stakeholders which were engaged with during the Community engagement sessions.

NAME OF STAKEHOLDER	CONTACT PERSON AND TEL
Youth Forum	0614153010
Department of Justice	0829530376
Social Worker	0764580877
Mochochonono White Door Centre	0732201332
ANDM Health Services	0716042315
Thembaletu Field Worker	0732674429
Makabongwe Lunch on Club	0727461590
Department of Home Affairs	0826723700
Masibumbane Hawkers Association	0734972951
Field Worker Mechochonono	0712146009
Business Chamber	0767249441
Circuit Manager Dept of Education	0722168227
Sector Commander & Crime Intelligence	0734587549
SPU Department of Education	0737581216

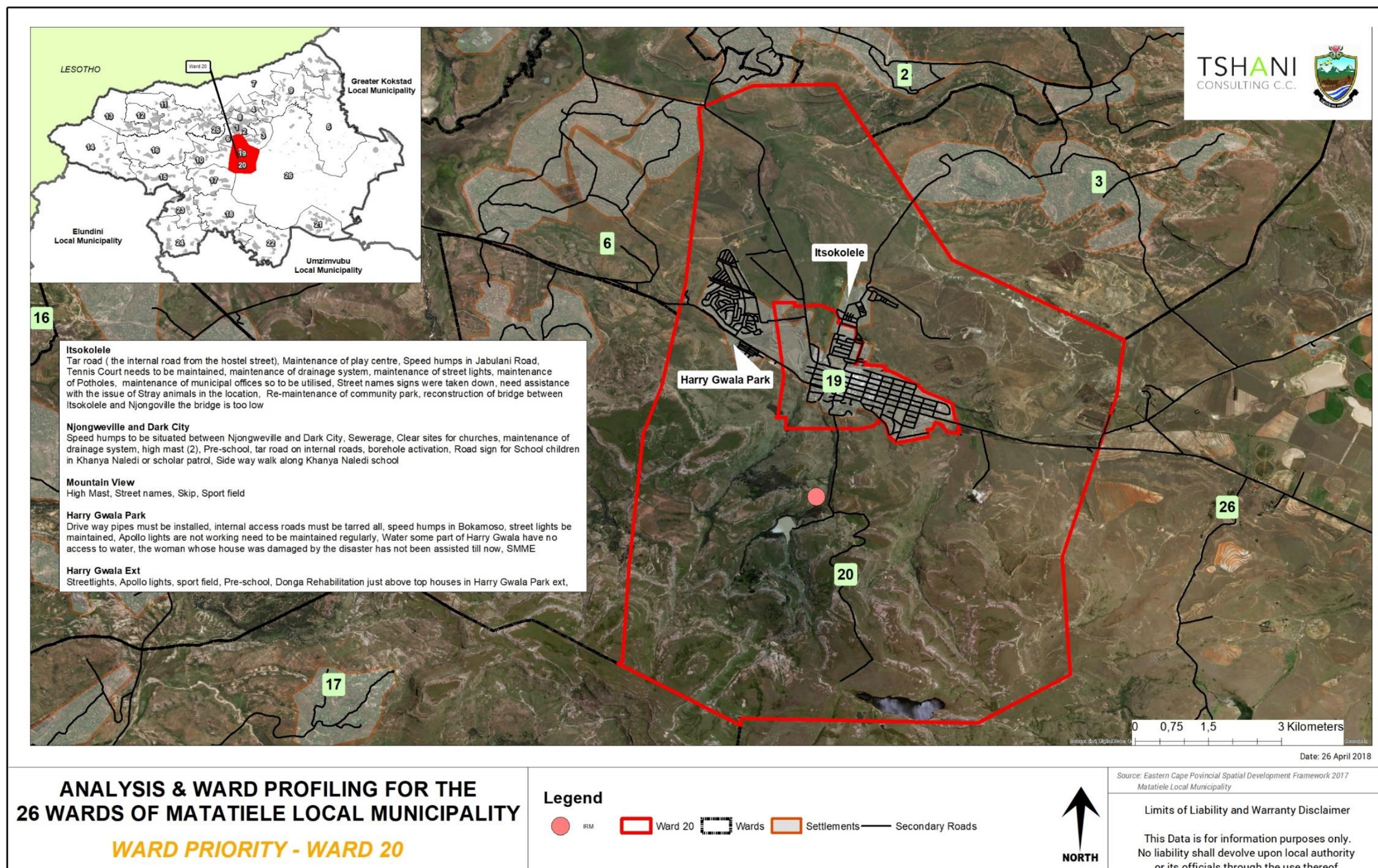
Department of Health	0605661003
Development and Planning	0647555138

Table 22:Stakeholders within Ward

9. Social Challenges within Ward

CHALLENGES IDENTIFIED	AFFACTED AREAS	IMPACT
High rate of crime Alcohol abuse and drugs Unemployment	Harry gwala park	Bad
High rate of crime Alcohol abuse Unemployment	Harry Gwala EXT	Bad
High rate of crime Alcohol abuse Unemployment	Itsokolelele	Bad
High rate of crime Alcohol abuse unemployment	Njongweville	Bad
High rate of crime Alcohol abuse unemployment	Njongweville EXT	Bad
Drinking spots (Shebeens) These drinking spots are ran in people's household.	Harry Gwala Ext, Njongoville Ext and Itsokolele	Bad

Table 23:Soial Challenges within Ward



Plan 11: Ward Priorities Plan